

Work Systems – The Next Scientific Challenge

Spring 2002 DCMME Partners' Steering
Committee Meeting

April 4, 2002

Welcome Partners

- ▶ David Dauch, American Axle & Manufacturing
- ▶ Bill Gripman, Ford Motor Company
- ▶ Bill Klenk, Allison Transmission
- ▶ Brian Madore, Ingersoll-Rand
- ▶ Tom McDuffee, Saint-Gobain Containers
- ▶ Roger Miller, Eli Lilly & Co.

Welcome Partners (cont.)

- ◆ Ann Schneider, Allison Transmission
- ◆ Greg Schroeder, Kimberly Clark
- ◆ David Staehler, Eli Lilly & Co.
- ◆ Jeffrey Tew, GM Enterprise Systems Lab
- ◆ Denny Warner, Rolls-Royce Allison
- ◆ Robert Zokoe, American Axle & Manufacturing

Welcome Invited Guests

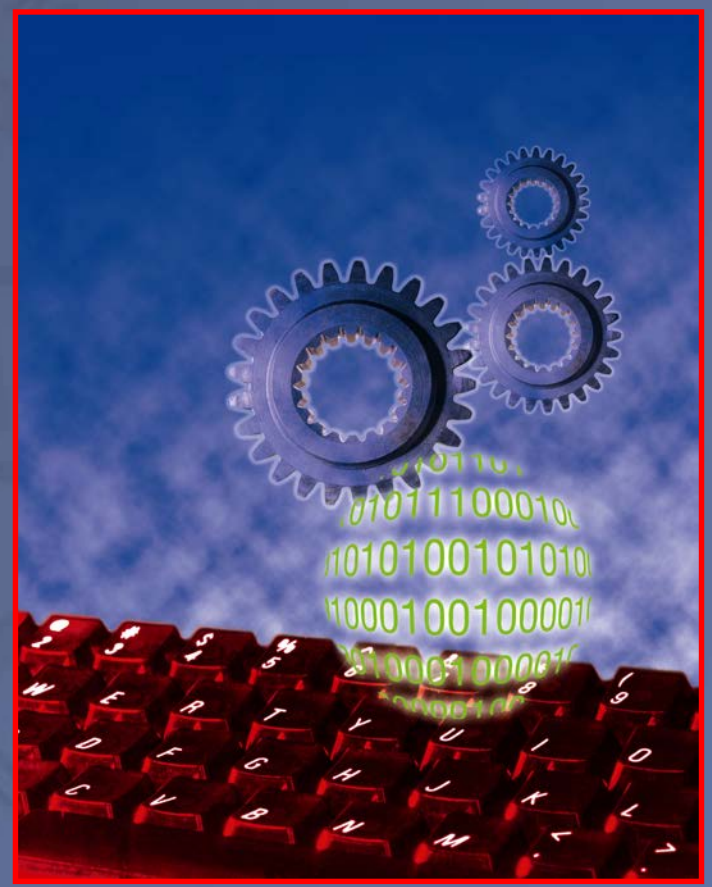
- ▶ Anthony Flesch, Maple Leaf Farms
- ▶ Peter Santori
- ▶ Roger Willis, Independent Consultant

Welcome Purdue Faculty & Staff

- ▶ Heather Connell, Krannert Development
- ▶ Rick Cosier, Dean
- ▶ Greg Kapp, University Development Office
- ▶ David Lasater, Krannert Development
- ▶ Curt Overpeck, Digital Enterprise Center
- ▶ Bob Plante, Senior Associate Dean
- ▶ John Schneider, Industry Research/Outreach

Notebook Materials

- ▶ Agenda
- ▶ Director's Report
- ▶ Fall Meeting Minutes
- ▶ Speaker Bios
- ▶ Presentations
- ▶ Roundtable Questions
- ▶ Case Competition
- ▶ Recruiting Guide
- ▶ Feedback Survey



2001 DCMME Annual Report

Meeting Agenda

- ◆ 8:00 a.m. Dean's Welcome
- ◆ 8:10 a.m. Corporate Partner Introductions & Meeting Overview
- ◆ 8:30 a.m. Work Systems – The Next Scientific Challenge
- ◆ 9:30 a.m. Partner-Student Roundtable Discussion
- ◆ 10:30 a.m. Break
- ◆ 10:45 a.m. Advanced Manufacturing Summit Report
- ◆ 11:00 a.m. Future Goals & Directions for DCMME

Meeting Agenda

- ◆ 11:30 a.m. AAM – Operations Club Plant Tour Overview
- ◆ 12:00 p.m. Lunch with DCMME students
- ◆ 1:00 p.m. Group Photo
- ◆ 1:30 p.m. Operations Club Case Competition
- ◆ 3:45 p.m. Wrap-up & Closing Remarks

Director's Report



Welcome & Purpose of Meeting

- Update Partners and Guests on DCMME activities and directions, as well as seek council
- Focus on issue of interest and concern in manufacturing to allow for dialogue & learning across enterprises
 - ◆ Last meeting...Managing Surprises
 - ◆ This meeting...Work Systems...How work in organizations will change
- Interact with DCMME students to learn more about our culture and to build relationships of mutual benefit

Mission Statement

- Promote & Enhance Manufacturing Management via Learning, Discovery, and Engagement

Mission Statement

■ Learning

- ◆ Manufacturing Management (MM) Program...Undergraduate
 - Graduates
 - Statistics
 - Industrial Management Student Association (IMSA)
- ◆ Manufacturing/Technology Management Program...Graduate (MBA)
 - Graduates 2002, 2003
 - Statistics
 - Operations Club
 - Plant Trips...AAM, IR, and GM Allison

Mission Statement

- Discovery

- ◆ Student Consulting Projects

- Maple Leaf Farms...Cost reduction (mfg), Global Competitiveness

- Honeywell...Aircraft Landing Systems

- Incorporate field brake performance into financial analysis & pricing functions

- Improve inventory management practices

- ◆ Faculty Research Grants...Mgmt, Economics, OB/HR

Mission Statement

- Discovery (*cont.*)
 - ◆ Pending Contract Research Proposals
 - U.S. Coast Guard Spares Management
 - Supply Chain Benchmarking Index
 - ◆ Six Sigma Animated Simulation, Case-Based, Active, Self-Learning Model
 - ◆ Visiting Scholars
 - Drs. Jyrki & Hannele Wallenius, “An Internet-Based Hybrid Procedure for Negotiations and Auctions: Systems, Theory, & Application

Mission Statement

- Engagement
 - ◆ Advanced Manufacturing Summit...Economic Development
 - ◆ E-Enterprise Center Roadmapping Workshop (Discovery Mall)...Sharpen Mission & Formulate Strategy & Business Plan

Work Systems

- ◆ Keynote Speaker: Dr. Jeffrey Tew

