

Accessing Your Network Storage

Purdue provides all faculty, staff and students with a career account designed to serve most of their computing needs. This account includes 500 MB of storage space that you can access pretty much anywhere with the right configuration.

From a computer with a Purdue IP Address (computer connected through ResNet or PAL 2.0)

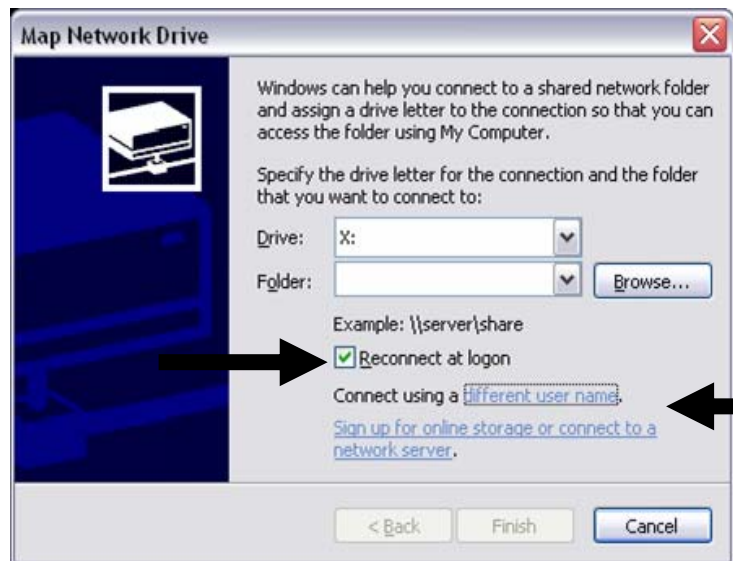
Right click on **My Computer** and select **Map Network Drive**.



Select the drive letter you want and type the server name as shown below:

Purdue Network Storage (your H: drive):\\offcampus.ics.purdue.edu\yourlogin

Make sure **Reconnect at logon** is checked, and then click on **Connect using a different username**.



Type **ICS\username** for H: drive in the username field.

Enter your password and hit **ok**.



Click on **Finish** and the folder you have just mapped should open automatically.

From a computer without a Purdue IP address

(off campus connected through other network provider, such as cable modem or AOL dial-up)

You will need to set up a VPN connection. Once you have set up and connected successfully to the VPN connection, follow the steps on the previous pages to map your home directory.

To do this for **Windows XP**:

1. Click "Start" - select "Control Panel" - double click on "Network Connections".
2. From the File menu at the top - select "Create a new connection".
3. Click Next.
4. Select "Connect to the network at my workplace" - click Next.
5. Click on "Virtual Private Network Connection" - click Next.
6. Name the connection (example: VPN_Purdue) - click Next.
7. If the Public Network dialog box appears, choose the appropriate initial connection - click Next.
8. In the VPN Server Selection dialog, enter "vpn.purdue.edu" - click Next.
9. Click Finish.
10. Right click on the above icon you have created:
 - a. Select "Properties"
 - b. Click on the "Security" tab.
 - Under "Security Options" make sure the "Typical (recommended settings)" radio button is selected.
 - In the drop down box under "Validate my identity as follows" make sure "Require secured password" is selected.
 - Make sure that there is a check in the box for "Require data encryption (disconnect if none)"
 - c. Click OK