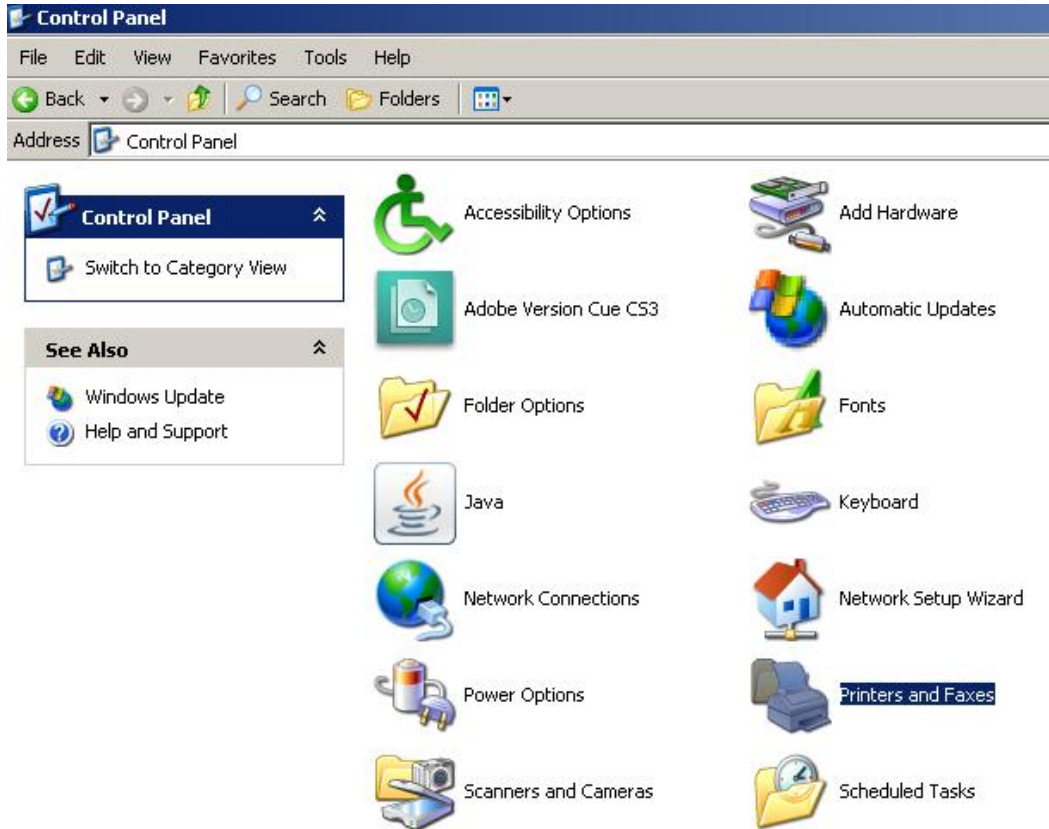
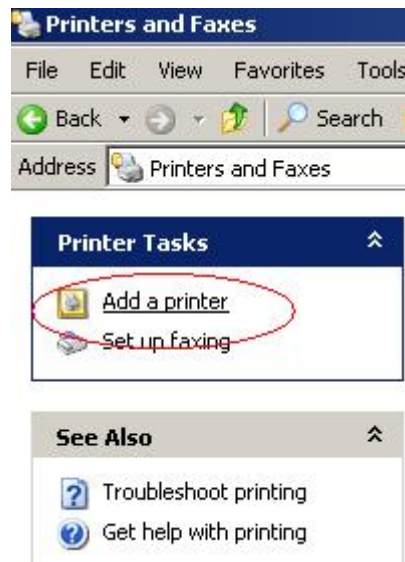


Instructions for printing to Krannert printers from Windows XP

1. Click the **Start** button.
2. Select **Control Panel**.
3. Double click the **Printers and Faxes** icon.



4. Click **Add a Printer**.



5. Click **A network printer**



Add Printer Wizard

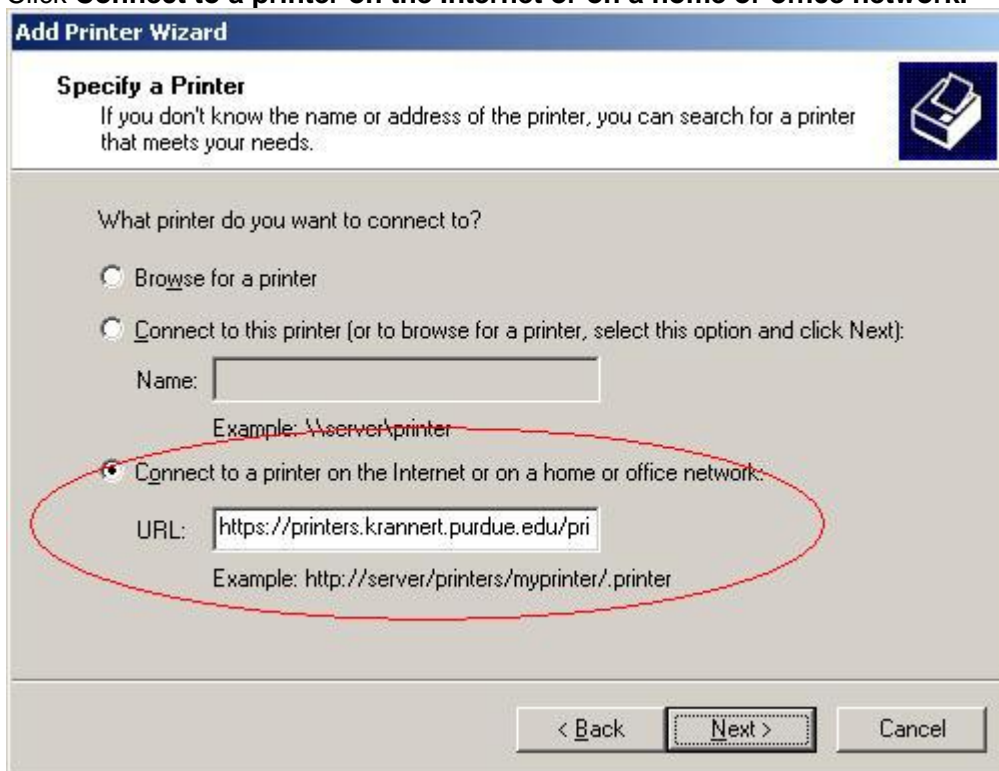
Local or Network Printer
The wizard needs to know which type of printer to set up.

Select the option that describes the printer you want to use:

Local printer attached to this computer
 Automatically detect and install my Plug and Play printer

A network printer, or a printer attached to another computer

6. Click **Connect to a printer on the Internet or on a home or office network.**



Add Printer Wizard

Specify a Printer
If you don't know the name or address of the printer, you can search for a printer that meets your needs.

What printer do you want to connect to?

Browse for a printer

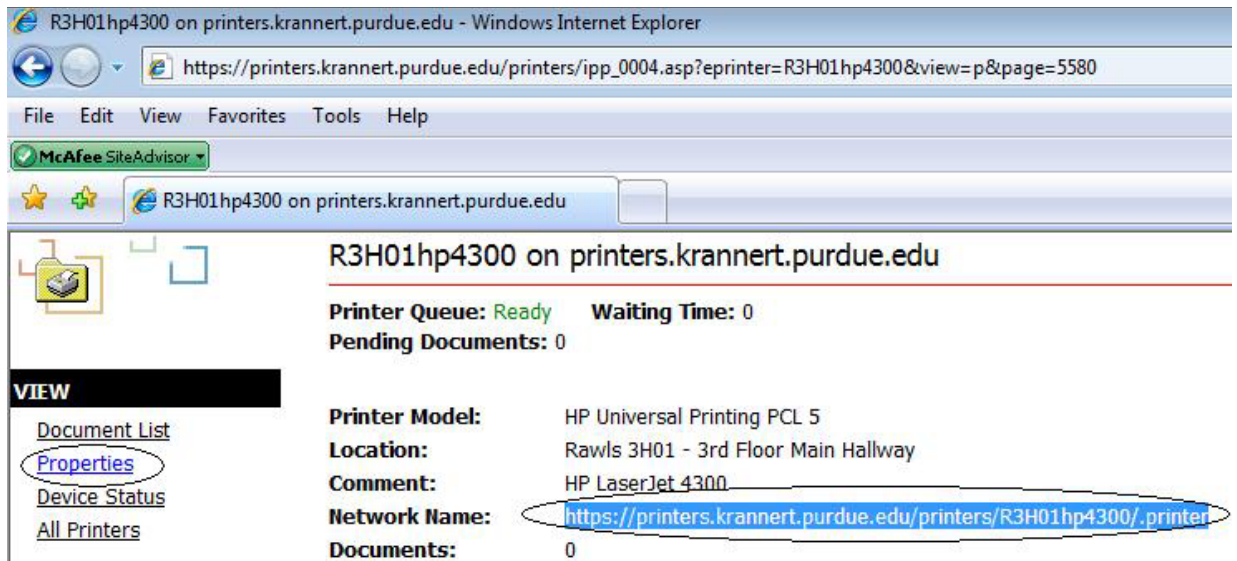
Connect to this printer (or to browse for a printer, select this option and click Next):
Name:
Example: \\server\printer

Connect to a printer on the Internet or on a home or office network.
URL:
Example: http://server/printers/myprinter/.printer

< Back Next > Cancel

7. Type the complete name of the printer you want to connect to in the format `https://printers.krannert.purdue.edu/printers/PRINTERNAME/.printer` (make sure to use **https://** instead of just **http**)
A full list of printers can be found at <https://printers.krannert.purdue.edu/printers>

The easiest way is to find the printer you want and click **Properties**.

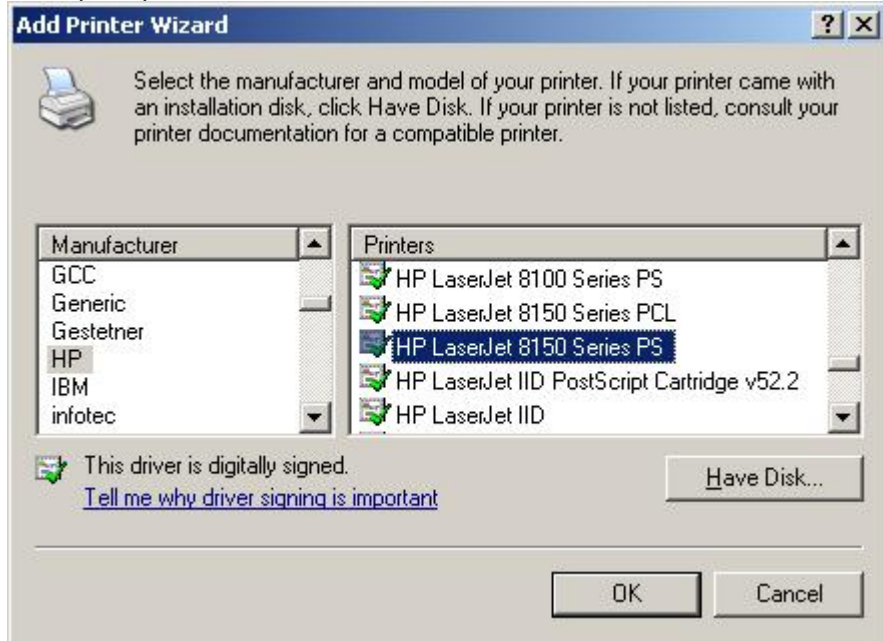


Then copy and paste the printer name into the **Add Printer** window, as shown above.

8. Click **Next**. You will be asked to provide your **career account** information..



9. If prompted to choose a driver, choose **HP LaserJet 8150 Series PS**



10. Windows XP will finish installing the printer to your computer – it should now appear in your list of printers.