

What is PAL 2.0?

Purdue AirLink (PAL) 2.0 is the standard method for connecting to Purdue's wireless network. PAL2.0 does not use VPN connections for authentication, so the connection is faster and more reliable.

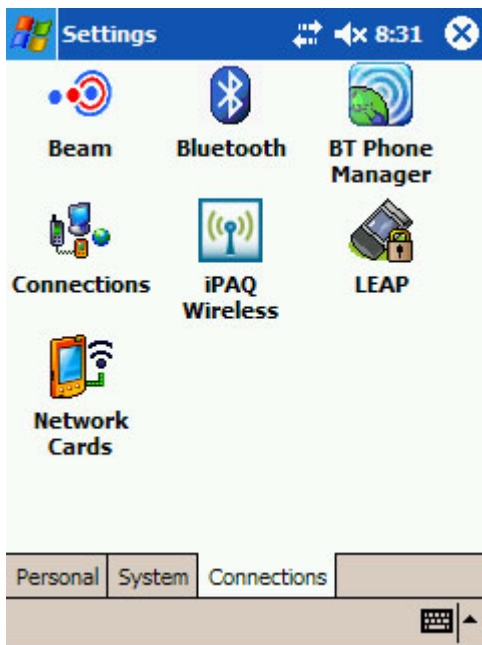
Why should I use PAL 2.0?

PAL 2.0 is a new method of connecting to and using the wireless network here at Purdue. It is more secure, reliable, and convenient than the first version of PAL. It uses encrypted and authenticated connections, also known as wi-fi protected access (WPA) connections, to Purdue's wireless access points. By using PAL 2.0, users are less likely to experience dropped connections, and they have the ability to roam to other access points without interruption. For example, it will be possible to sit in a lounge on the third floor of Rawls Hall and work on class notes then take that laptop to the first floor for class without dropping the wireless connection.

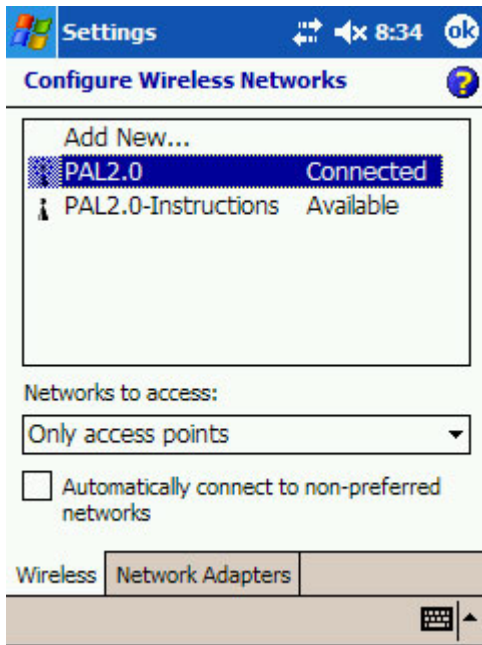
How to connect to PAL 2.0 With Pocket PC 2003

To connect to PAL 2.0 you will need to be using Windows Mobile 2003 or greater. All other PocketPC's are not supported.

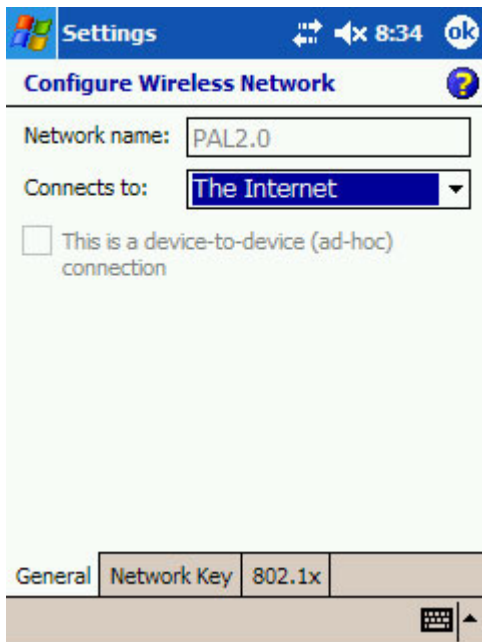
1. Select *Start* > *Settings* and then click on Network Cards.



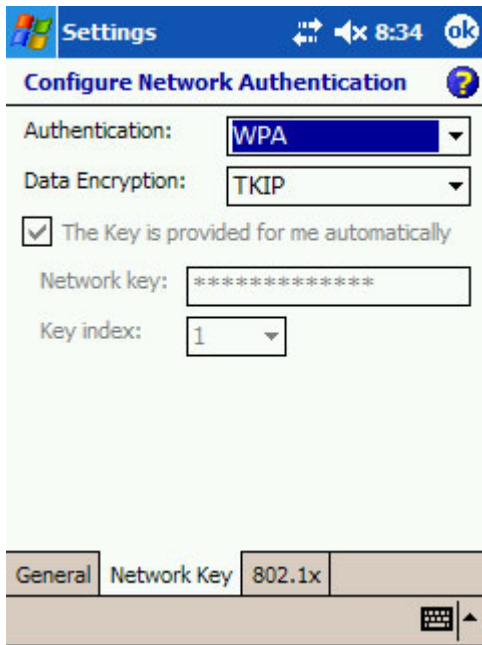
2. Under Configure Wireless Networks select *PAL2.0*.



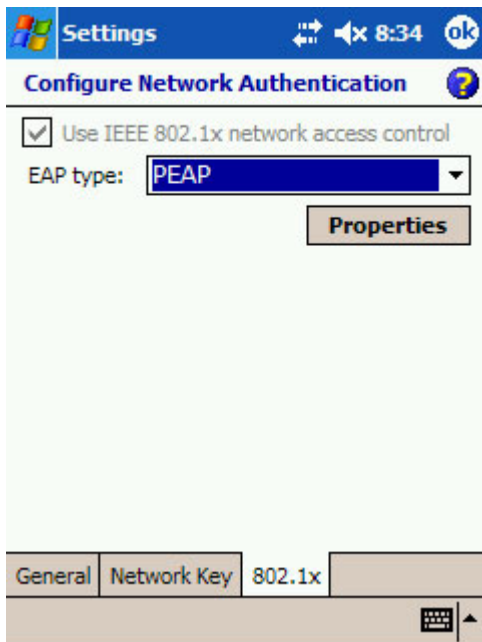
3. In the General tab, ensure the connection is set to Connect to *The Internet*.



4. Click the Network Key tab and make sure authentication is set to *WPA* and data encryption to *TKIP*.



5. Under the 802.1x tab, set the EAP type to *PEAP*.



6. Click *OK* to save your changes.

7. The PocketPC will now try to connect to the PAL2.0 network and after a few moments will ask for your login information. Enter your Purdue Career Account user name and password. Leave the Domain field blank. Turn on *Save password* then click *OK* at the bottom.

Network Log On

Enter network information to log on.

User name:

Password:

Domain:

Save password



8. The PocketPC should now be connected to the PAL2.0 network. Click OK until you are back to your main screen.