

What is PAL 2.0?

Purdue AirLink (PAL) 2.0 is the standard method for connecting to Purdue's wireless network. PAL2.0 does not use VPN connections for authentication, so the connection is faster and more reliable.

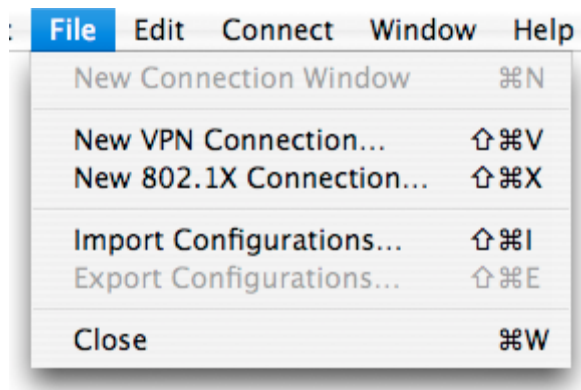
Why should I use PAL 2.0?

PAL 2.0 is a new method of connecting to and using the wireless network here at Purdue. It is more secure, reliable, and convenient than the first version of PAL. It uses encrypted and authenticated connections, also known as wi-fi protected access (WPA) connections, to Purdue's wireless access points. By using PAL 2.0, users are less likely to experience dropped connections, and they have the ability to roam to other access points without interruption. For example, it will be possible to sit in a lounge on the third floor of Rawls Hall and work on class notes then take that laptop to the first floor for class without dropping the wireless connection.

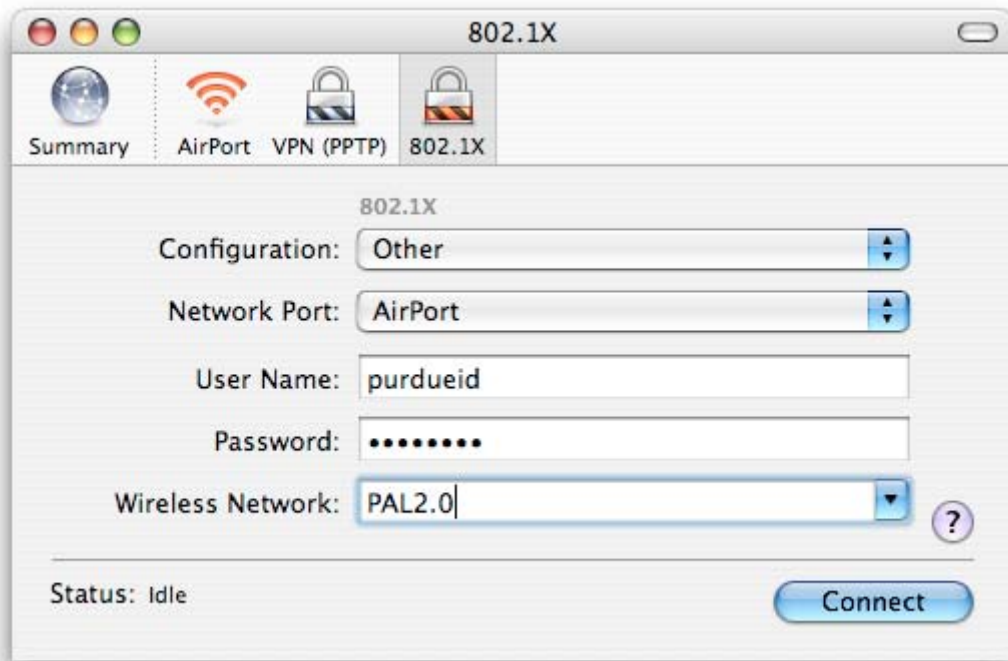
How to connect to PAL 2.0 with Mac OS X Tiger

To connect to PAL 2.0 you will need to be using Mac OS X 10.3 Panther or 10.4 Tiger. All other versions of Mac OS X are not supported. Panther users will need to have at least version 3.3 of the Airport software. Run Software Update to check this.

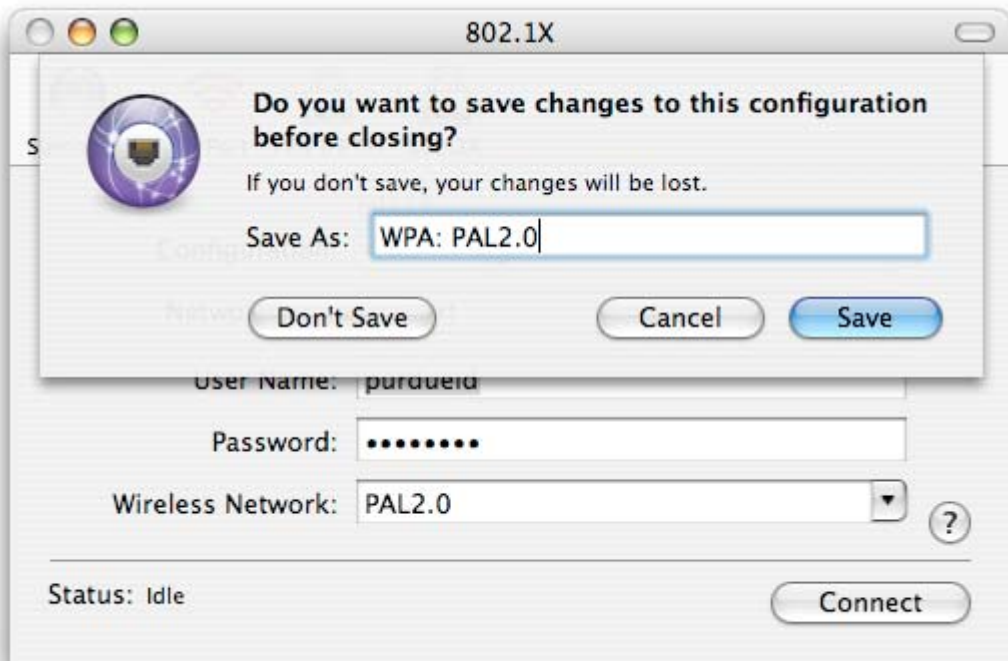
1. Go to your Applications folder and launch *Internet Connect*.
2. Select *File > New 802.1X Connection* from the menu bar.



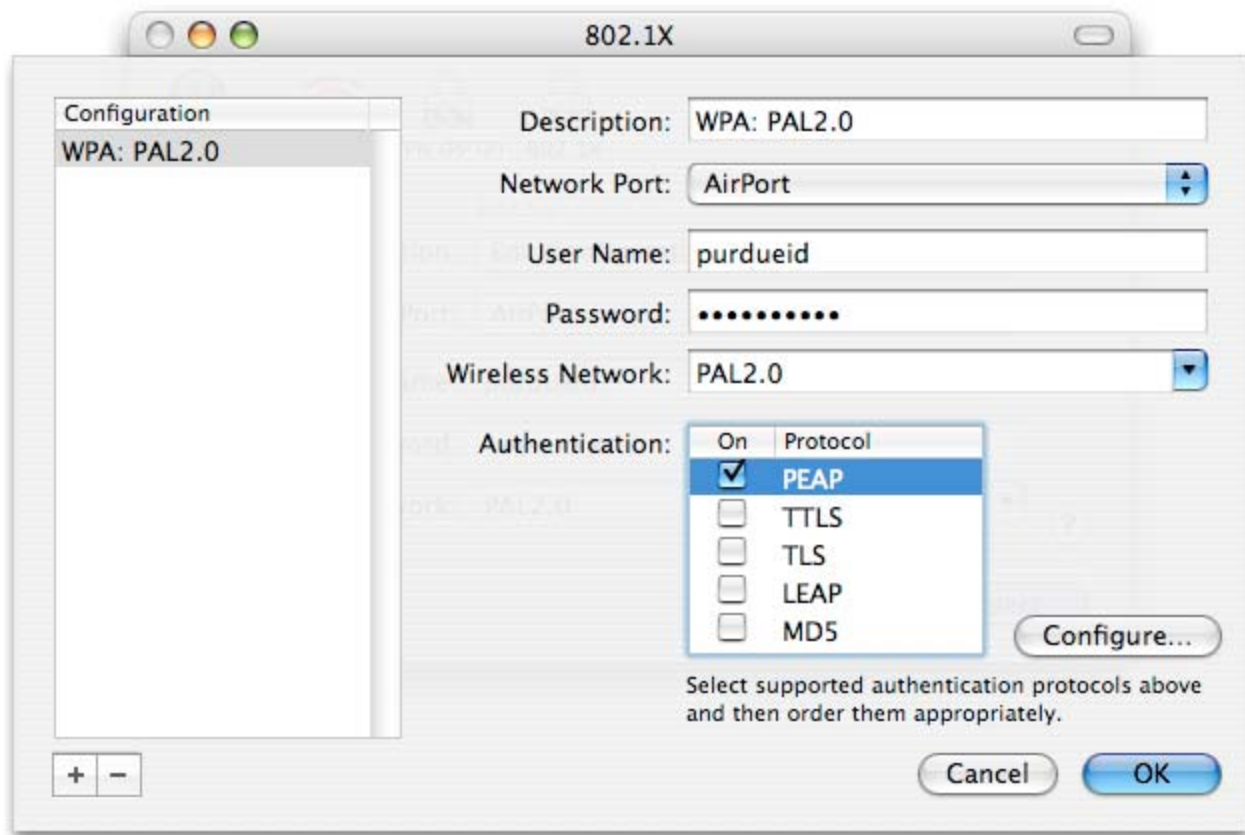
3. Ensure that *Airport* is selected as your Network Port. Enter your Purdue Career Account ID and password for the respective *User Name* and *Password* fields. For Wireless Network, enter *PAL2.0*.



4. From the *Configuration* pull-down menu select *Edit Configurations*. You will be asked to save your configuration. Save it as *WPA: PAL 2.0* and Click *OK*.



5. A sheet will roll down with the settings you previously entered as well as several authentication options to choose from. Uncheck them all except *PEAP*. Click *OK* to save your changes.



6. Click *Connect* to connect to PAL 2.0.

7. When you connect for the first time, you will receive a warning message that says, "The server certificate is not yet valid.". Click *Continue* to validate the certificate.



8. You should now be connect to PAL 2.0.

Note: To reconnect to PAL 2.0, select it from the Airport menu in your menu bar. If you don't see the menu bar, you can enable it *System Preferences > Network > Airport*. Make sure to check *Show Airport status in menu bar*.