

Windows VPN Connection Setting Instructions

In Windows 2000 and XP (any version), it is possible to establish a connection with the PAL or the off campus VPN servers directly, without needing to run the PAL Client application. To set up your Windows laptop to connect with VPN in this manner, do the following:

If you have previously installed the Cisco VPN Dialer, you **must** remove it before following these instructions. If you are satisfied using the Cisco VPN Dialer, please continue to do so.

If you have previously installed the Cisco VPN Dialer and wish to remove it, click [here](#) for instructions and then return to this page.

If after following these instructions you do not get connected right away, please click on the troubleshooting link to the left for additional support before calling the help desk.

Windows 2000 users only!

Windows 2000 requires a Registry edit to enable L2TP/IPSec to interoperate with Purdue's VPN servers. This is documented in Microsoft Knowledge Base article [310109](#). You can set the appropriate Registry settings by clicking [here](#). After you download the file, unzip the .reg file and double-click it to merge the entries into your Registry.

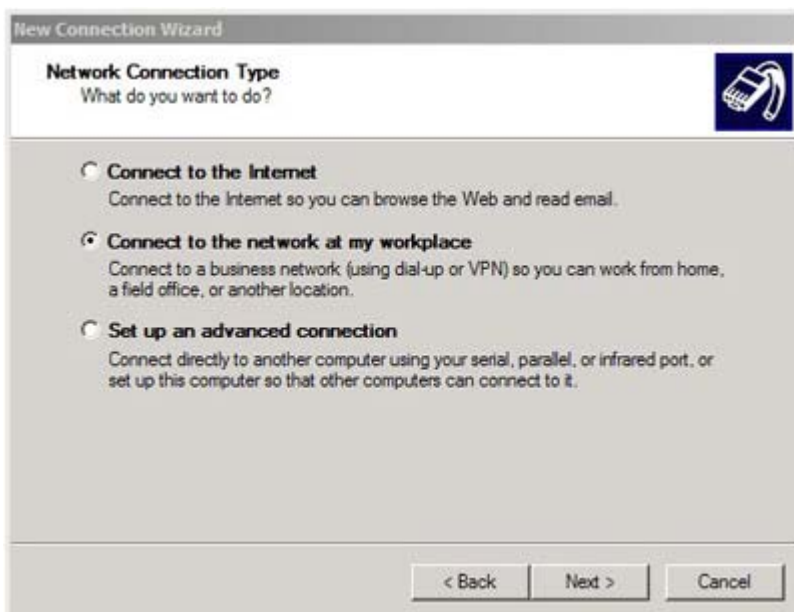
After adding these entries to your Registry, you must reboot your Windows 2000 system for the change to take effect. Then continue with the instructions below.

Note that some dialog boxes may appear different from those shown here.

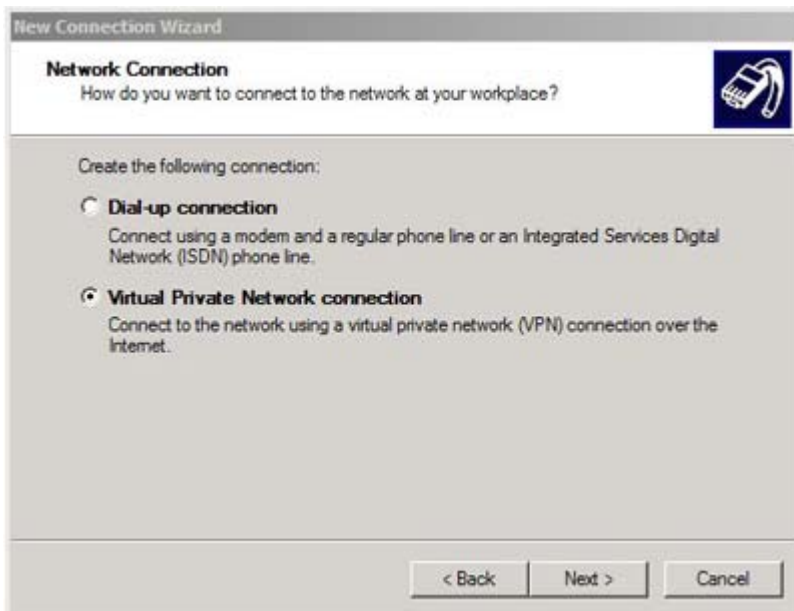
1. From the Start menu, select "Control Panel" and double-click on "Network Connections."
2. Double click the New Connection Wizard to launch it and click "Next >".



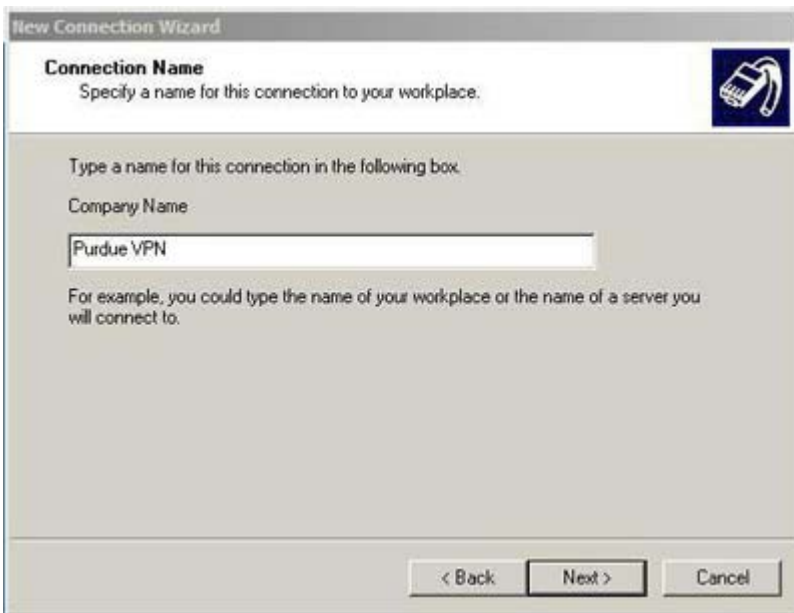
3. Select "Connect to the network at my workplace" and click "Next >".



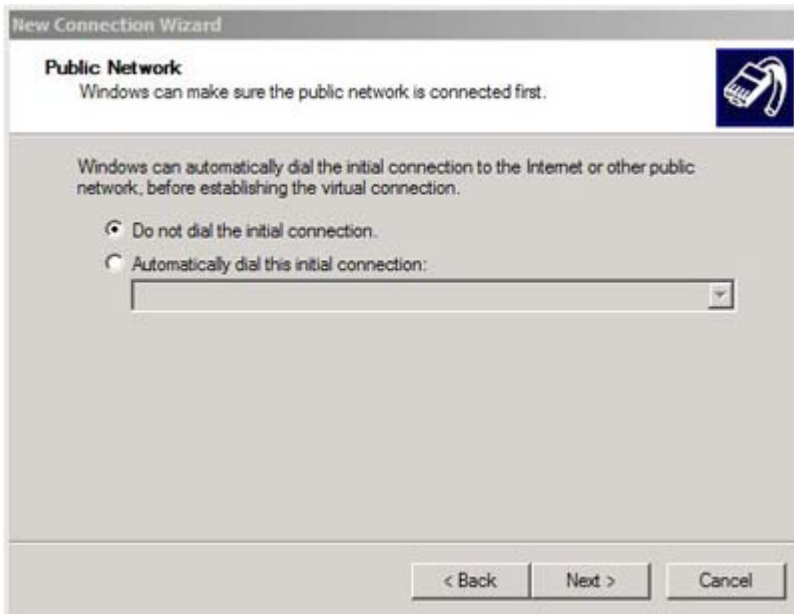
4. Select "Virtual Private Network Connection" and click "Next >".



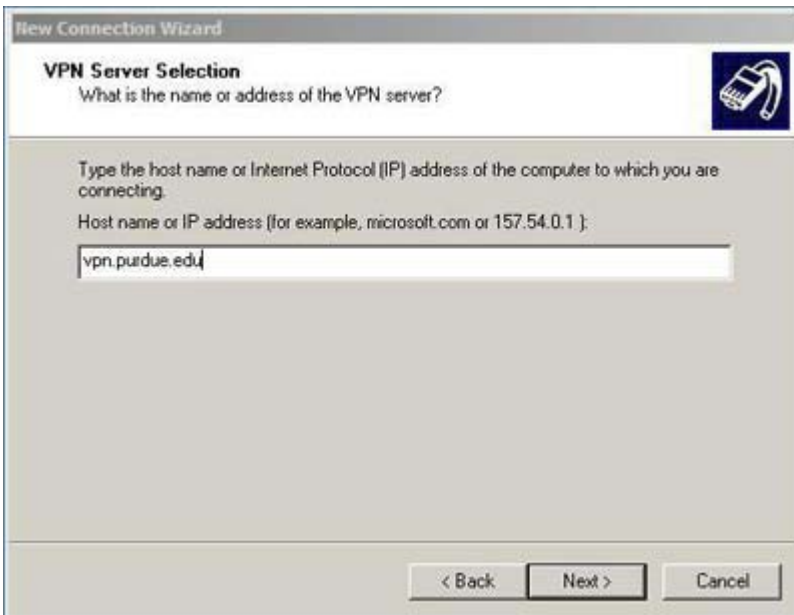
5. Enter a name for the connection (for example, "Purdue-VPN") and click "Next >".



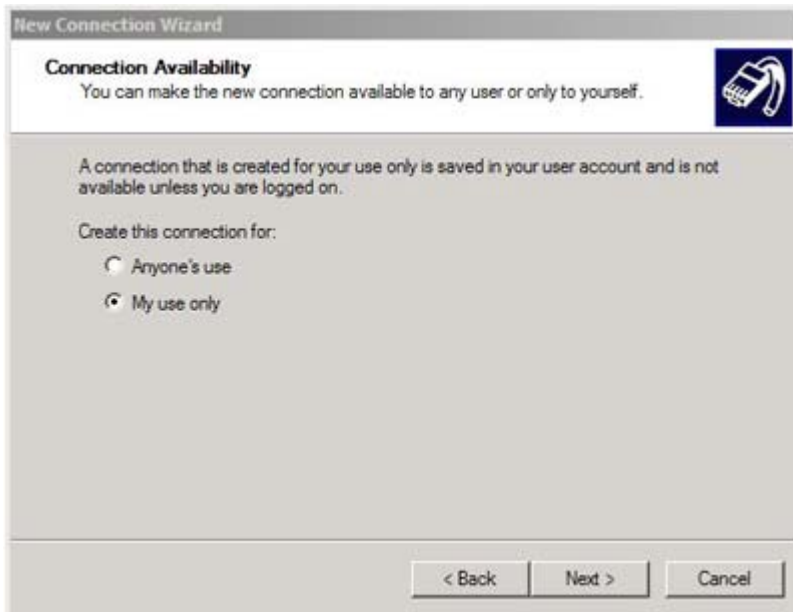
6. IMPORTANT: If the Public Network dialog appears, select "Do not dial the initial connection" and click "Next >".



7. In the VPN Server Selection dialog, enter "vpn.purdue.edu" as the host name and click "Next >".



8. In the Connection Availability dialog, select "My use only" and click "Next >". Note that Windows XP Home users may not be able to select any other option.



9. If you would like an icon for this connection to appear on your desktop, check the box next to "Add a shortcut to this connection to my desktop"; otherwise, leave the box unchecked. Click "Finish".



After you have completed creating your Purdue VPN connection using the New Connection Wizard, you can activate it at any time by doing the following: Start the VPN connection by clicking on the connection icon that you created on your desktop or in the "Network Connections" folder under "Control Panel" on "My Computer". A dialog box will appear requiring a user name and password.

Enter your Purdue Career Account ID and password and click "Connect". For greater security and to prevent unauthorized users from accessing Purdue's network with your computer, leave the box next to "Save this user name and password for the following users:" unchecked. You will be prompted for your user name and password at each connection.